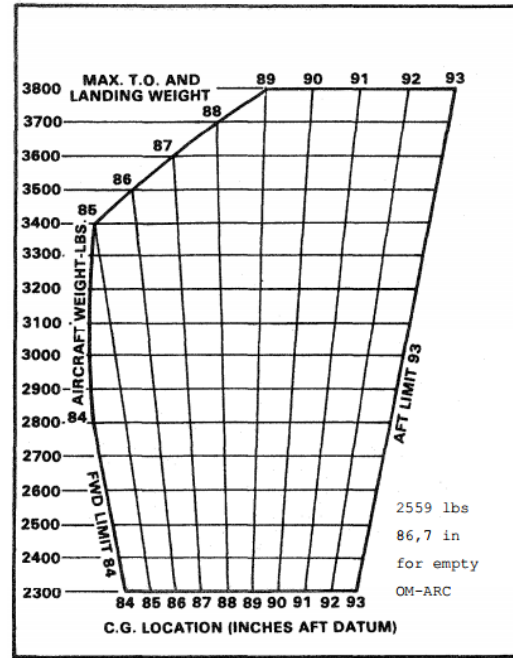


Piper Seminole



Name: _____ CFI: _____ Date: _____

AIRCRAFT ID	WEIGHT	ARM	MOMENT
EMPTY WEIGHT			
PILOT/FRONT PASSENGER		80.5	
REAR PASSENGER		118.1	
BAGGAGE AREA		142.8	
ZERO FUEL WEIGHT			
FUEL IN POUNDS		95	
RAMP WEIGHT			
TAXI/RUN UP		-95	
RAMP/TAKEOFF WEIGHT			
FUEL BURN		-95	
LANDING WEIGHT			



Max Takeoff Weight.....	3800	Acceptable CG Range.....	84 - 93	Fuel Weight.....	6.01lbs/gal (US)
Useful Load.....	1250	Max Landing Weight.....	3800	Oil Weight.....	1.86lbs/qt (US)

Take Off Distance: _____ 50ft Obstacle: _____ Accel/Stop: _____ Pressure Altitude: _____

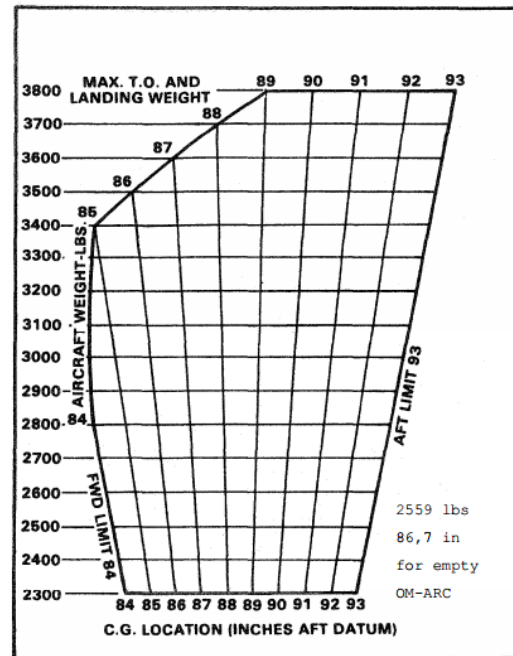
Landing Distance: _____ Over 50 Obstacle: _____ Density Altitude: _____

Piper Seminole



Name: _____ CFI: _____ Date: _____

AIRCRAFT ID	WEIGHT	ARM	MOMENT
EMPTY WEIGHT			
PILOT/FRONT PASSENGER		80.5	
REAR PASSENGER		118.1	
BAGGAGE AREA		142.8	
ZERO FUEL WEIGHT			
FUEL IN POUNDS		95	
RAMP WEIGHT			
TAXI/RUN UP		-95	
RAMP/TAKEOFF WEIGHT			
FUEL BURN		-95	
LANDING WEIGHT			



Max Takeoff Weight.....	3800	Acceptable CG Range.....	84 - 93	Fuel Weight.....	6.01lbs/gal (US)
Useful Load.....	1250	Max Landing Weight.....	3800	Oil Weight.....	1.86lbs/qt (US)

Take Off Distance: _____ 50ft Obstacle: _____ Accel/Stop: _____ Pressure Altitude: _____

Landing Distance: _____ Over 50 Obstacle: _____ Density Altitude: _____

Flight Data/ Weather

NOTAMS/ TFRs: _____

Departure Weather: Information: _____ // Time: _____
Wind Direction: _____ Wind Speed: _____ Visibility: _____
Cloud Layer: _____ Temp: _____ Dew Point: _____
Altimeter: _____ Remarks: _____

Runway A: _____ x-wind _____ kts / headwind: _____ kts
Runway B: _____ x-wind _____ kts / headwind: _____ kts
Density Altitude: _____ ft // Pressure Altitude: _____ ft

Departure Performance: Take Off Weight: _____

Take Off Distance: _____ / 50': _____

Landing Distance: _____ / 50': _____

Single Engine Service Ceiling: _____ Vy: _____

Runway A: _____ Length: _____ Vx: _____

Runway B: _____ Length: _____ VA: _____

Initial Climb: _____ fpm/ _____ fpm

Arrival Weather: Information: _____ // Time: _____
Wind Direction: _____ Wind Speed: _____ Visibility: _____
Cloud Layer: _____ Temp: _____ Dew Point: _____
Altimeter: _____ Remarks: _____

Runway A: _____ x-wind _____ kts / headwind: _____ kts
Runway B: _____ x-wind _____ kts / headwind: _____ kts
Density Altitude: _____ ft // Pressure Altitude: _____ ft

Landing Performance: Landing Weight: _____

Landing Distance: _____ / 50': _____

Approach Speed: _____

Runway A: _____ Length: _____

Runway B: _____ Length: _____

Go-Around Climb (flaps): _____ fpm/ _____ fpm

Go-Around Climb (no flaps): _____ fpm/ _____ fpm

Flight Data/Weather

NOTAMS/ TFRs: _____

Departure Weather: Information: _____ // Time: _____
Wind Direction: _____ Wind Speed: _____ Visibility: _____
Cloud Layer: _____ Temp: _____ Dew Point: _____
Altimeter: _____ Remarks: _____

Runway A: _____ x-wind _____ kts / headwind: _____ kts
Runway B: _____ x-wind _____ kts / headwind: _____ kts
Density Altitude: _____ ft // Pressure Altitude: _____ ft

Departure Performance: Take Off Weight: _____

Take Off Distance: _____ / 50': _____

Landing Distance: _____ / 50': _____

Single Engine Service Ceiling: _____ Vy: _____

Runway A: _____ Length: _____ Vx: _____

Runway B: _____ Length: _____ VA: _____

Initial Climb: _____ fpm/ _____ fpm

Arrival Weather: Information: _____ // Time: _____
Wind Direction: _____ Wind Speed: _____ Visibility: _____
Cloud Layer: _____ Temp: _____ Dew Point: _____
Altimeter: _____ Remarks: _____

Runway A: _____ x-wind _____ kts / headwind: _____ kts
Runway B: _____ x-wind _____ kts / headwind: _____ kts
Density Altitude: _____ ft // Pressure Altitude: _____ ft

Landing Performance: Landing Weight: _____

Landing Distance: _____ / 50': _____ VREF: _____

Runway A: _____ Length: _____

Runway B: _____ Length: _____

Go-Around Climb (flaps): _____ fpm/ _____ fpm

Go-Around Climb (no flaps): _____ fpm/ _____ fpm